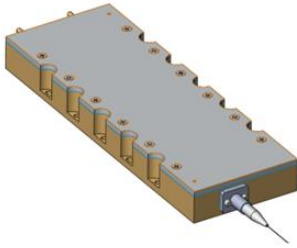


ME34 Series 915nm 760W Uncooled Multimode Laser Diode Module

TY-ME34-0915+/-10NM-760.0W-25C-0.22NA



SkyEra delivers TY-ME34-0915+/-10NM-760.0W-25C-0.22NA diode lasers employing professional coupling technology, that enjoy multiple advantages, e.g., compact design, stable output power, high power, high efficiency and convenient packaging. These laser diode modules can provide solutions for fiber laser applications and direct suppliers.

The performance and aging tests have been performed upon the production line to guarantee reliable, stable and long lifetime of products. To provide customers with high-quality, high cost performance products is the company's goal.

Specification:

Functional parameters are tested on condition that the heat sink temperature is 25 degree, contact resistance of the component and the heat sink is smaller than 1CM² K/W.

Key Parameters:

- Based on single fire spot laser module
- High output power 760W
- High stability
- 0.22NA 220µm core multimode fiber
- Parallel weld 2-Pin sealed package
- Standard central wavelength 915nm
- RoHS compliance
- High-brightness

Application:

- pump source
- Material processing

Parameter	Min	Typ	Max	Unit	Conditions
Output Power	-	760	-	W	
Centre Wavelength	-	-	-	nm	HR@ 1050-1150>25dB
ME34	905	915	925		HR@ 1060-1100>30dB
Spectral Width (FWHM)	-	4.5	6.0	nm	
Threshold Current	-	1.5	2.0	A	
Operating Current	-	-	30.0	A	
Operating Voltage	-	55.0	57.0	V	
Conversion Efficiency	-	48	-	%	
95% Power	-	0.18	-	NA	
Wavelength shift vs. Temperature	-	0.35	-	nm/°C	
Slop Efficiency	-	25.0	-	W/A	
Storage Temperature	-30	25	70	°C	Non-Condensing
Operating Temperature	20	25	30	°C	
Fiber Bend Radius	50	-	-	mm	
Core Diameter	-	220	-	µm	
Cladding Diameter		242		µm	
Buffer Diameter		320		µm	
Numeric Aperture	-	0.22	-	-	
Fiber length	1.5	1.8	-	M	
Protection Tube	0.9	1.5	-	mm	
Fiber Connector	-	CO	-	-	

